

# CAST STEEL ANGLE BOILER CROWN COMBINED STOP and NON-RETURN VALVE

FIG: 281DP

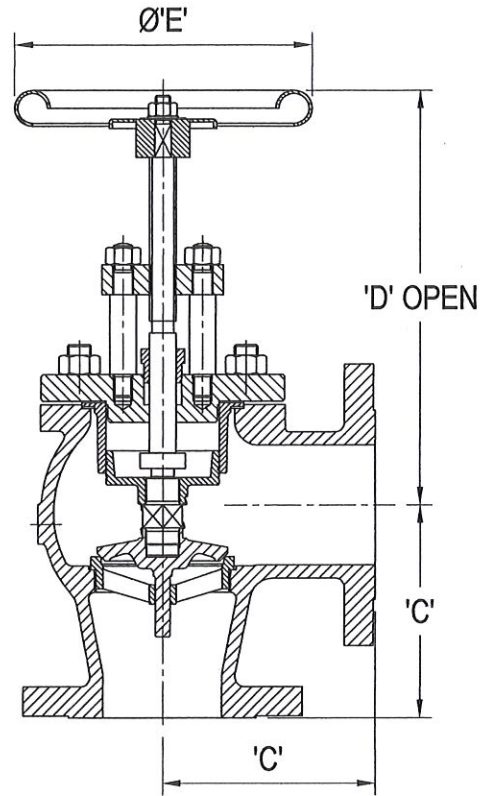


FIG No. 281DP

**PRESSURE / TEMPERATURE RATING:**

In accordance with BSI, BS EN 13709 (Formally BS 5160\*) and ANSI specifications.  
 For the line flange connection required, refer to the Pressure Temperature Rating Chart in the Technical Data Section of our website.

**FLANGED:**

BS EN 1092-1      PN10, PN16, PN25, PN40.  
 BS 10 Tables      E, F, H.  
 ANSI B16.5      Class 150.

**CONSTRUCTION:**

Bolted cover, outside screw SDNR valve with rising spindle.  
**These valves should be installed with the Valve Head vertical.**  
 Supplied with internal dashpot to minimise noise and wear caused by chatter.  
 Flanges will be drilled unless otherwise specified on order.

**MATERIALS:**

Body                      Carbon steel to BS EN 10213 gr. GP240GH (WCB) 0.23%C max.  
 Cover                     Carbon steel to BS EN 10028 161 - 430  
 Disc                        Stainless steel to ASME SA 487 CA6NM Cl.'A'  
 Seat Ring                Stainless steel to BS EN 10283 1.4408  
 Stem                        Stainless steel to BS EN 10088-3 1.4006  
 Dashpot / Cylinder    Gunmetal to BS EN 1982 CC491K  
 Gland Packing          Exfoliated graphite

**OPTIONAL EXTRAS:**

Open and shut indicator  
 Locking device.  
 Gearbox.

**TYPE OF APPLICATION:**

Isolation.  
 Fluid non-return.

**LINE MEDIA:**

Wet / saturated steam.  
 Condensate.  
 High temperature hot water.  
 Medium temperature hot water.  
 Low temperature hot water.  
 Cold 'clean' water.

\* DIM C centre to face dimensions to BS 4312

Nominal Size		80	100	125	150	200
C	PN 10 16 25 40	152	178	203	229	260
	BST E, F, H, ANSI 150					
D		333	372	457	577	665
E		200	250	315	400	530
Weight Kg		36	54	85	120	207