

CAST STEEL ANGLE STOP VALVE



FIG: 281

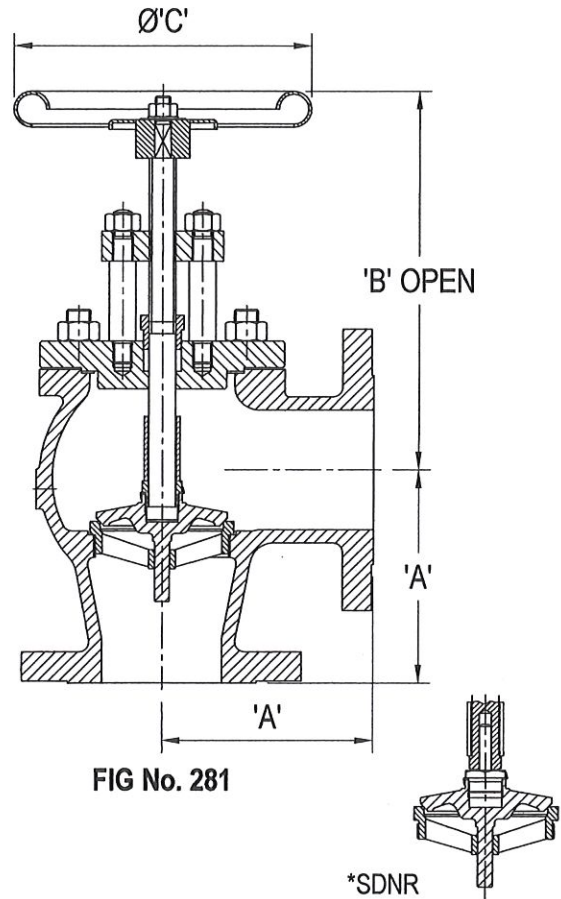
PRESSURE / TEMPERATURE RATING:
 In accordance with BSI, BS EN 13709 (Formerly BS 5160*) and ANSI specifications.
 For the line flange connection required, refer to the Pressure Temperature Rating Chart in the Technical Data Section of our website.

FLANGED:
 BS EN 1092-1 PN10, PN16, PN25, PN40.
 BS 10 Tables E, F, H.
 ANSI B16.5 Class 150.

CONSTRUCTION:
 Valves will be supplied as stop valves screw lift (S/L) as illustrated unless specified combined stop and non-return (SDNR) as shown*.
These valves should be installed with the Valve Head vertical.
 Bolted cover, outside screw and rising stem.
 Flanges will be drilled unless otherwise specified on order.

MATERIALS:
 Body Carbon steel to BS EN 10213 gr. GP240GH (WCB) 0.23%C max.
 Cover Carbon steel to BS EN 10028 161 - 430
 Disc Stainless steel to ASME SA 487 CA6NM Cl.'A'
 Seat Ring Stainless steel to BS EN 10283 1.4408
 Stem Stainless steel to BS EN 10088-3 1.4006
 Gland Packing Exfoliated graphite
 Alternative trim available:
 Gunmetal disc and seat, high tensile brass spindle.

* DIM A centre to face to BS 4312



OPTIONAL EXTRAS:
 Open and shut indicator
 Locking device.
 Actuator operation.
 Gearbox and remote operation.

TYPE OF APPLICATION:
 Isolation.

LINE MEDIA:
 Wet / saturated steam.
 Condensate.
 High temperature hot water.
 Medium temperature hot water.
 Low temperature hot water.
 Cold 'clean' water.

Nominal Size		15-20	25	32	40	50	65	80	100	125	150	200
A	PN 10 16 25 40	83	83	114	114	127	140	152	178	203	229	260
	BST E, F H, ANSI 150	83	83	102	102	127	140	152	178	203	229	260
B		185	209	229	229	277	280	289	337	422	541	670
C		125	160	160	160	200	200	200	250	315	400	530
Weight Kg		7	8	16	16	22	26	33	48	77	108	207