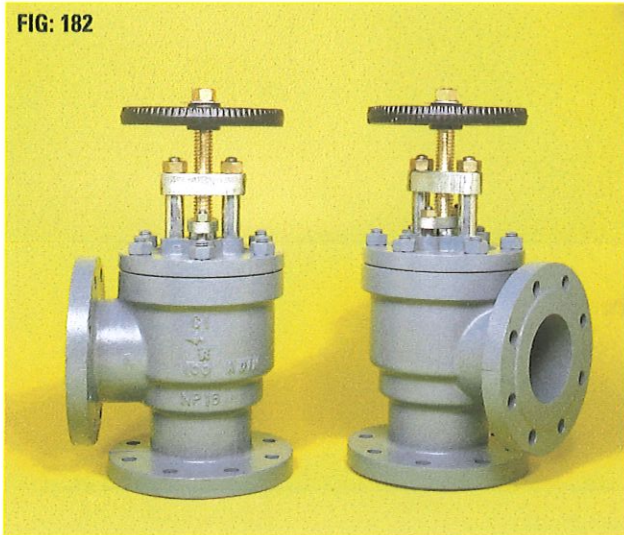


# CAST IRON ANGLE STOP VALVE

FIG: 182



## PRESSURE / TEMPERATURE RATING:

In accordance with BSI, BS EN 13789 (Formerly BS 5152) and ANSI specifications.

For the line flange connection required, refer to the Pressure Temperature Rating Chart in the Technical Data Section of our website.

**Max. temp. 180°C - restricted use.**

## FLANGED:

BS EN 1092-2	PN6, PN10, PN16.
BS 10 Tables	D, E, F.
ANSI B16.1	Class 125.

## CONSTRUCTION:

Valves will be supplied as stop valves screw lift (S/L) as illustrated unless specified combined stop and non-return (SDNR) as shown\*.

**These valves should be installed with the Valve Head vertical.**

Bolted cover, outside screw and rising stem.

Flanges will be drilled unless otherwise specified on order.

## MATERIALS:

Body / Cover	Cast iron to BS EN 1561 EN GJL 250
Disc / Seat Ring	Gunmetal to BS EN 1982 CC491K
Stem	High tensile brass to BS EN 12164 CW 721 R
Gland Packing	Exfoliated graphite

Alternative trim available: stainless steel.

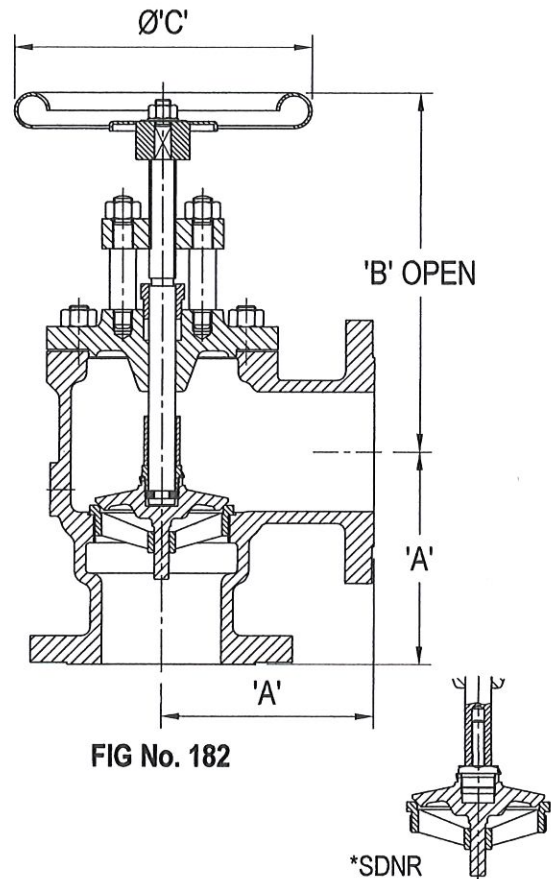


FIG No. 182

\*SDNR

## OPTIONAL EXTRAS:

Open and shut indicator  
Locking device.

## TYPE OF APPLICATION:

Isolation.

## LINE MEDIA:

High temperature hot water.  
Medium temperature hot water.  
Low temperature hot water.  
Cold 'clean' water.

Nominal Size	25	32	40	50	65	80	100	125	150	200
A	100	105	115	125	145	155	178	203	229	248
B	179	200	200	238	273	295	334	400	515	560
C	160	160	160	200	200	200	250	315	400	530
Weight Kg.	9	11	11	17	21	24	34	48	64	125